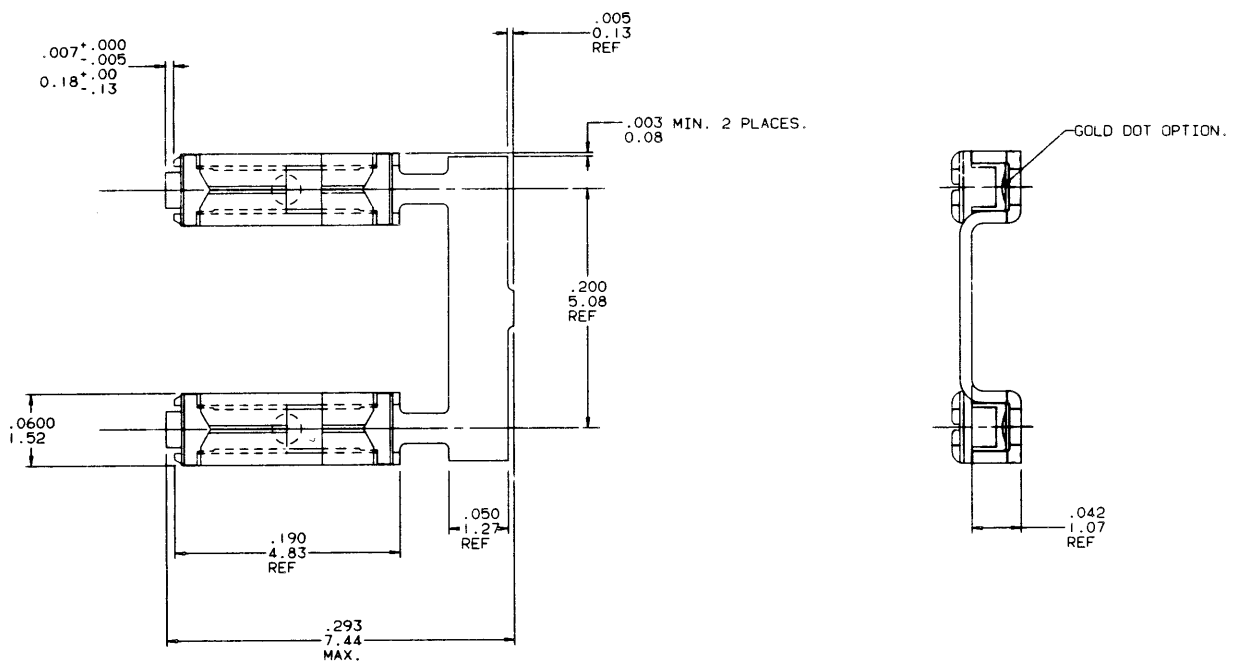


PRODUCT NO	TERMINAL BODY	TERMINAL SPRING
75800-001	1/4 HARD BRASS WITH GOLD FLASH AND 40 $\mu$ /1.02 $\mu$ Au IN CONTACT AREA.	.0048/.122 THICK HEAT TREATED BE-CU WITH GOLD FLASH.
75800-002	1/4 HARD BRASS WITH TIN-LEAD PLATING.	.0048/.122 THICK HEAT TREATED BE-CU WITH TIN PLATING.
75800-003	O B S O L E T E	
75800-004	1/4 HARD Cu Ni WITH .001/.03 MIN THICK GOLD DOT.	.0048/.122 THICK HEAT TREATED BE-CU WITH GOLD FLASH.

REVISIONS			
REV	DESCRIPTION	BY	DATE
A	RELEASE-REDRAW	JGS	5/6/91



SHEET INDEX		ISSUE A											CUSTOMER COPY		
SH NO 1													CODE IDENT 22526		
MODEL I		DO NOT SCALE DRAWING		TOLERANCE UNLESS OTHERWISE NOTED		INCH/MM		MATERIAL		DR J. SHREINER		DATE 5/6/91		TITLE	
				.00±.01/.0±.3						ENGR M. HAHN		5/6/91		MINI JUMP TERMINAL .200 C.C.	
FABULATION SHEETS REQUIRED		YES NO		THIRD ANGLE PROJECTION		LINEAR		FINISH		APPD M. HAHN		5/6/91		SCALE SIZE DWG NO CAD	
				INCH MM		.00001/.0020/.0001/.051						20/1 D 75800		SHEET 1 OF 1	
						ANGLES 0° ± 2°									

NOTE: This print is the property of and contains proprietary designs of THE DUPONT COMPANY. No part of the design shown on this print may be used in any way without the written consent of DUPONT ELECTRONICS, New Cumberland, PA.